

4

3

2

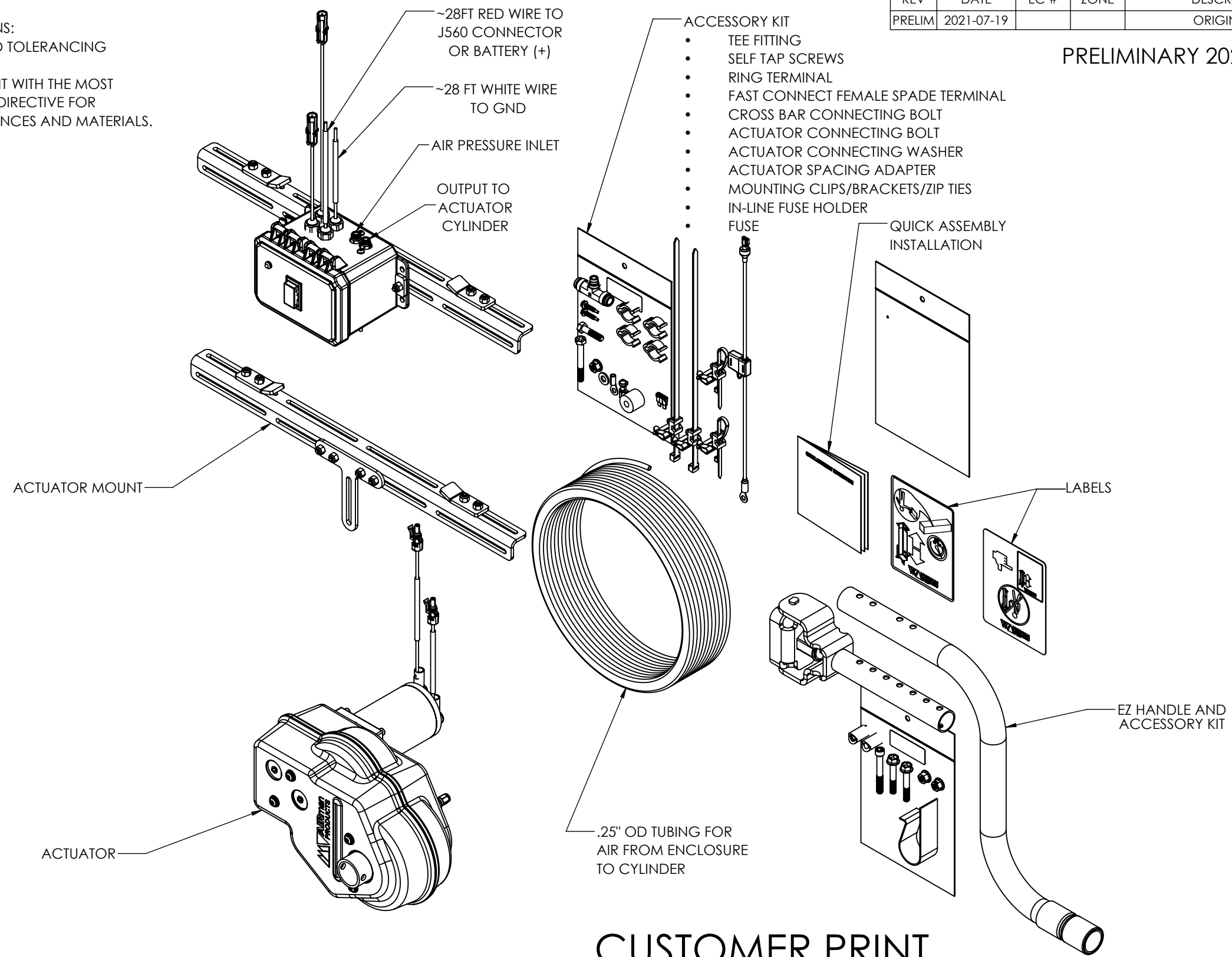
1

NOTES:

1. APPLICABLE STANDARDS/SPECIFICATIONS:  
ASME Y14.5M-1994, DIMENSIONING AND TOLERANCING  
ASME Y14.38-1999, ABBREVIATIONS
2. COMPONENT OR ITEM TO BE COMPLIANT WITH THE MOST CURRENT REVISION OF THE RoHS / Wee DIRECTIVE FOR THE REDUCTION OF HAZARDOUS SUBSTANCES AND MATERIALS.

REV	DATE	EC #	ZONE	DESCRIPTION	DRAWN	CKD
PRELIM	2021-07-19			ORIGINATED	NR	

PRELIMINARY 2021-07-19



# CUSTOMER PRINT

NOTE: PART MUST BE CLEAN AND BURR FREE  
MFG TOLERANCES UNLESS OTHERWISE NOTED:  
ALL UNITS ARE INCHES  
(2) DECIMAL PLACES: ±.01  
(3) DECIMAL PLACES: ±.005  
ANGLES: ±.5°  
BREAK ALL EDGES .005/.015 X 45°  
MACHINED SURFACES TO BE 63 RMS  
CRITICAL CHARACTERISTIC - CONTROL PLAN REQUIRED

CONFIDENTIAL: THIS DRAWING OR ANY PART THEREOF IS PROPRIETARY AND MAY NOT BE REPRODUCED OR COPIED WITHOUT WRITTEN CONSENT OF AIRMAN PRODUCTS

Third Angle Projection

DRAWN BY	NR	DESCRIPTION
DRAWN DATE	2020-10-16	DART ASSY
DRAWING SIZE	B	PART NUMBER
MATERIAL	SEE NOTES	B1000-161
SCALE	1:6	
SHEET #	1 OF 1	

4

3

2

1

B

B

A

A