

4

3

2

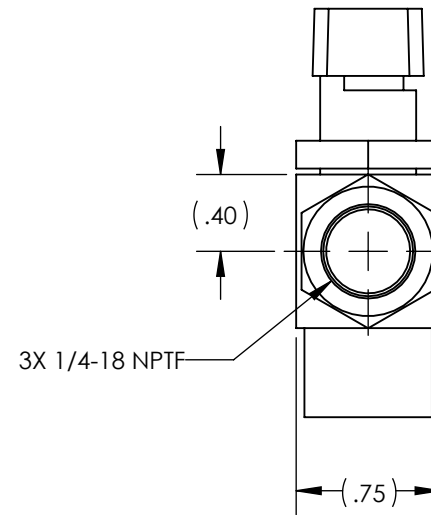
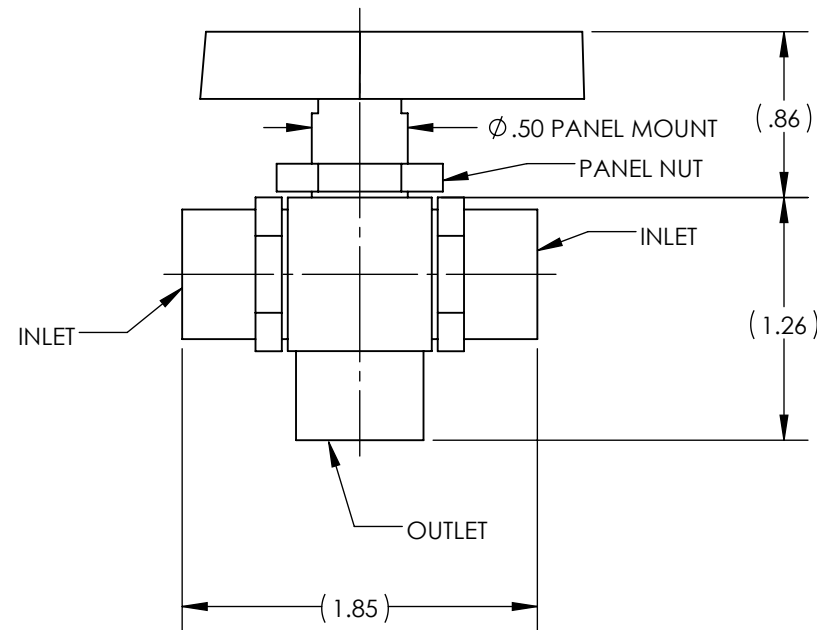
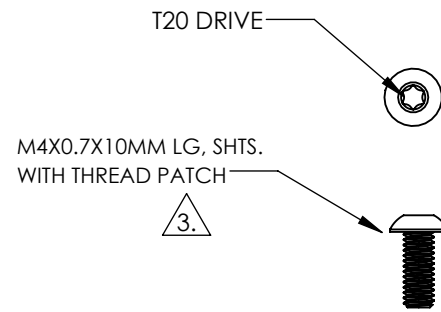
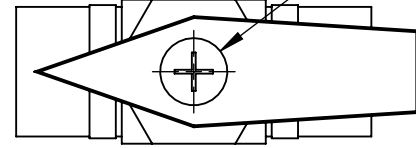
1

NOTES:

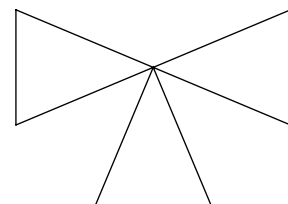
- 1. APPLICABLE STANDARDS/SPECIFICATIONS:
ASME Y14.5M-1994, DIMENSIONING AND TOLERANCING
ASME Y14.38-1999, ABBREVIATIONS
- 2. COMPONENT OR ITEM TO BE COMPLIANT WITH THE MOST CURRENT REVISION OF THE RoHS / Wee DIRECTIVE FOR THE REDUCTION OF HAZARDOUS SUBSTANCES AND MATERIALS.
- 3. PLACE SCREW IN BAG AND SEAL.
VALVE ASSEMBLY AND BAGGED SCREW TO BE PLACED IN AIRMAN BAG AND SEAL.

REV	DATE	EC #	ZONE	DESCRIPTION	DRAWN	CKD
A	2018-09-17			ORIGINATED	MJO	CED
B	2018-11-15	2131		CHANGED SCREW	MJO	CED
C	2020-11-17	2222		ADDED BAG	NR	

DURING INSTALLATION:
REMOVE AND DISCARD SCREW.
REPLACE WITH SCREW PROVIDED IN KIT.
TORQUE TO 5.0±0.5 IN-LBS.

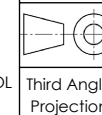


FLOW SCHEMATIC



CUSTOMER PRINT

NOTE: PART MUST BE CLEAN AND BURR FREE
MFG TOLERANCES UNLESS OTHERWISE NOTED:
ALL UNITS ARE INCHES
(2) DECIMAL PLACES: ±.01
(3) DECIMAL PLACES: ±.005
ANGLES: ±.5°
BREAK ALL EDGES .005/.015 X 45°
MACHINED SURFACES TO BE 63 RMS
CRITICAL CHARACTERISTIC - CONTROL PLAN REQUIRED



CONFIDENTIAL: THIS DRAWING OR ANY PART THEREOF IS PROPRIETARY AND MAY NOT BE REPRODUCED OR COPIED WITHOUT WRITTEN CONSENT OF AIRMAN PRODUCTS

DRAWN BY	MJO	DESCRIPTION
DRAWN DATE	2018-09-17	BV, 3 WAY, 1/2" PNL MT WITH PATCHED SCR
DRAWING SIZE	B	
MATERIAL	SEE NOTES	PART NUMBER
SCALE	1:1	K1100-331
SHEET #	1 OF 1	

4

3

2

1

B

B

A

A